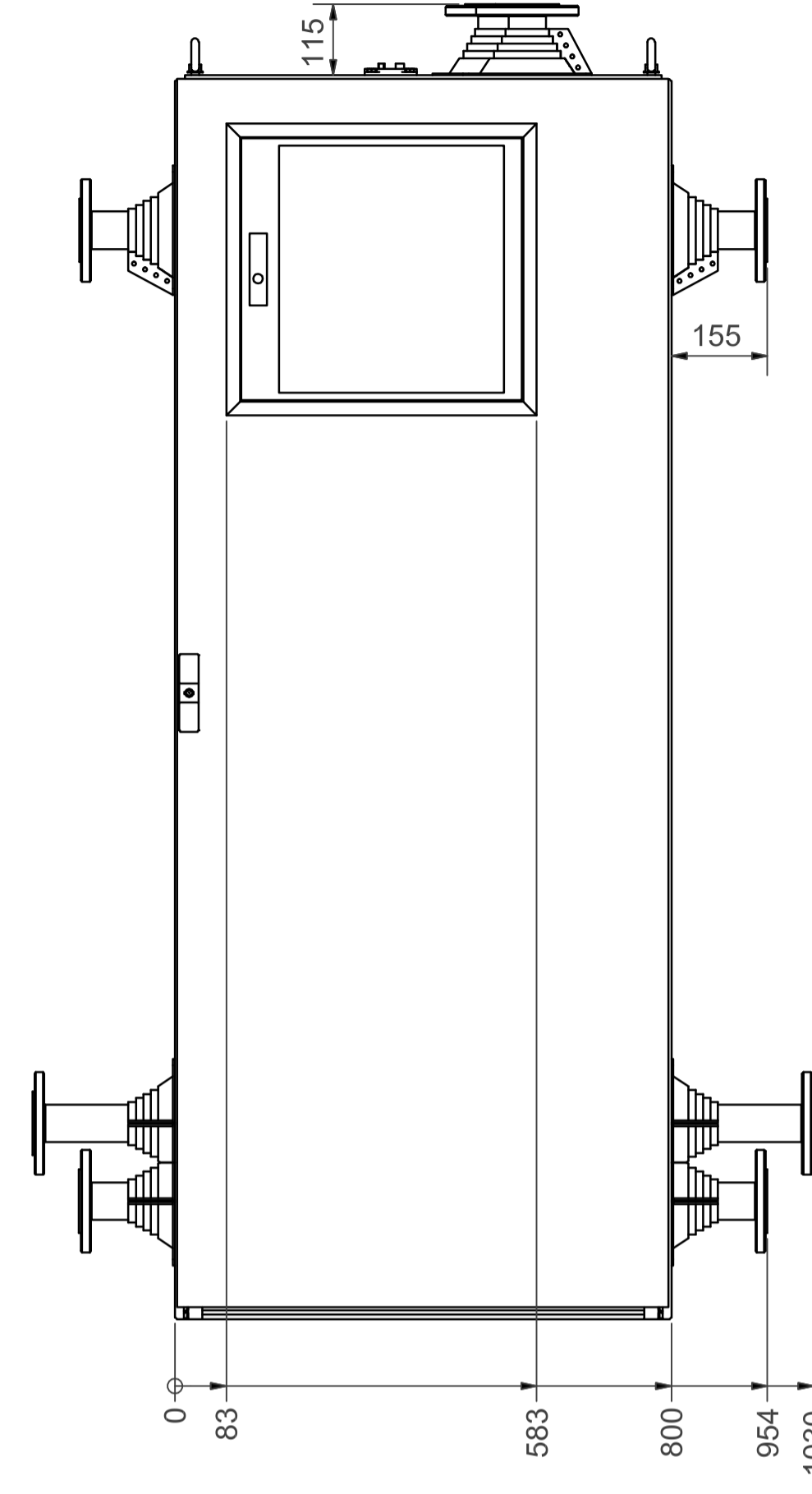
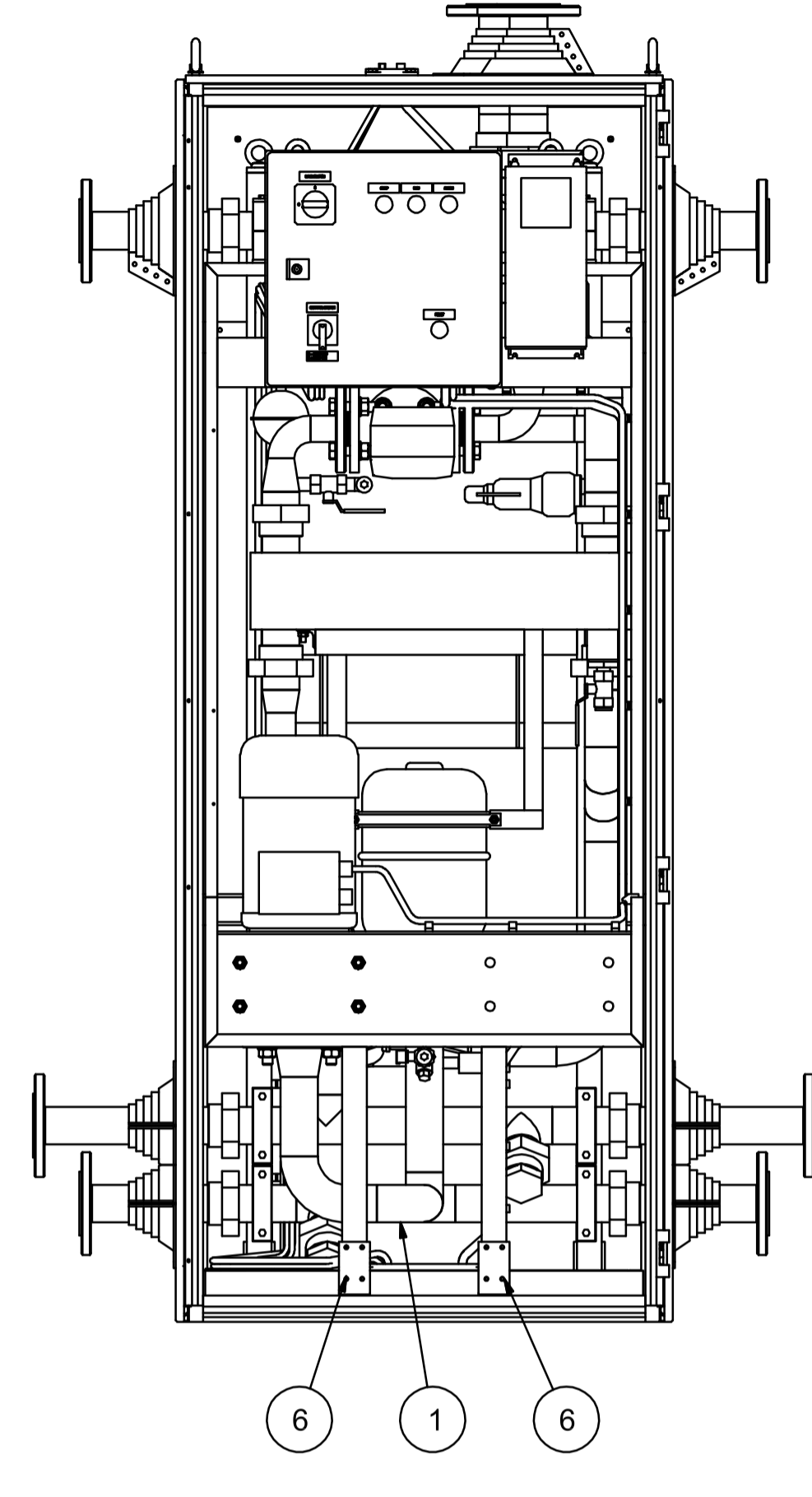


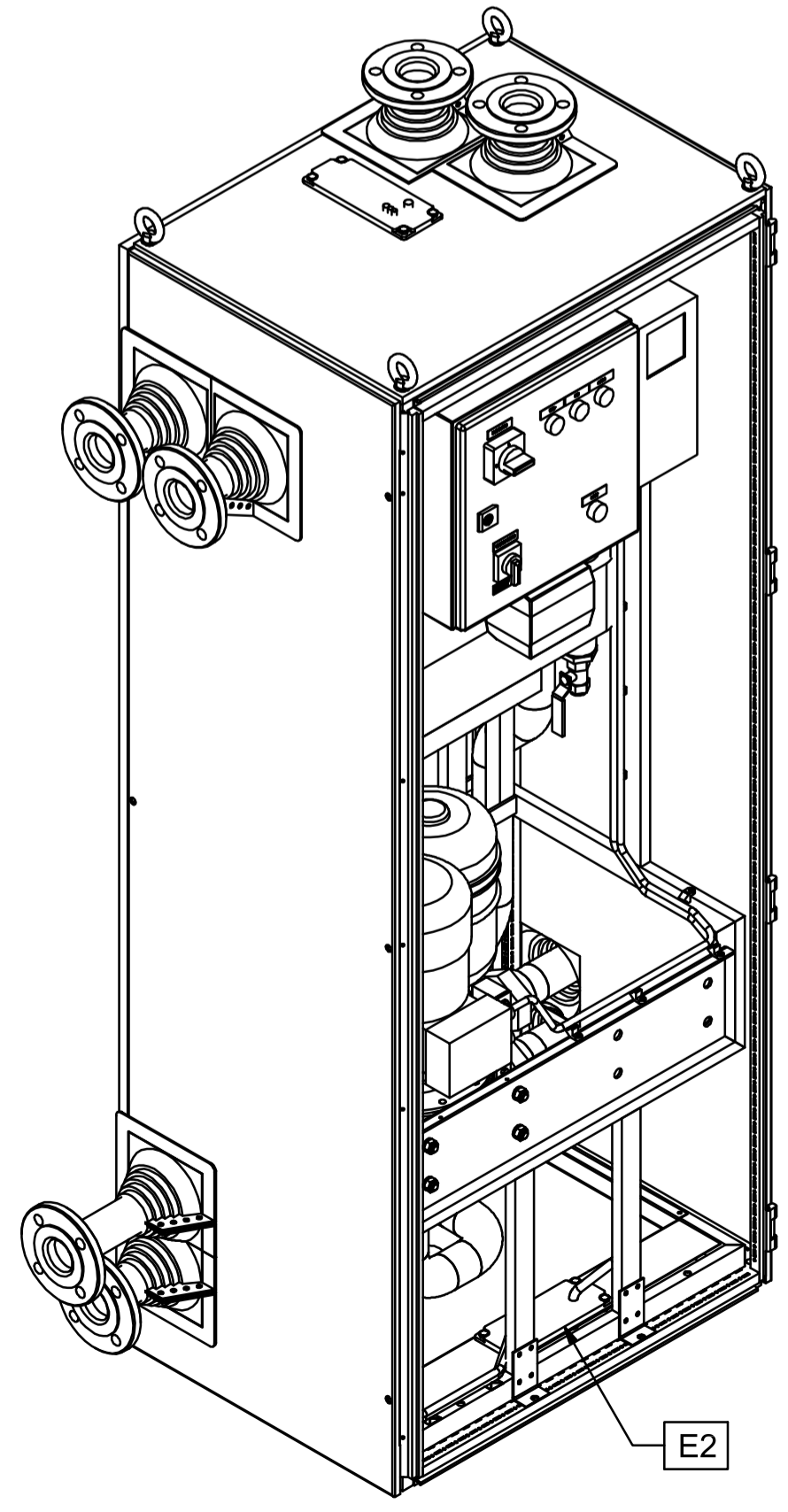
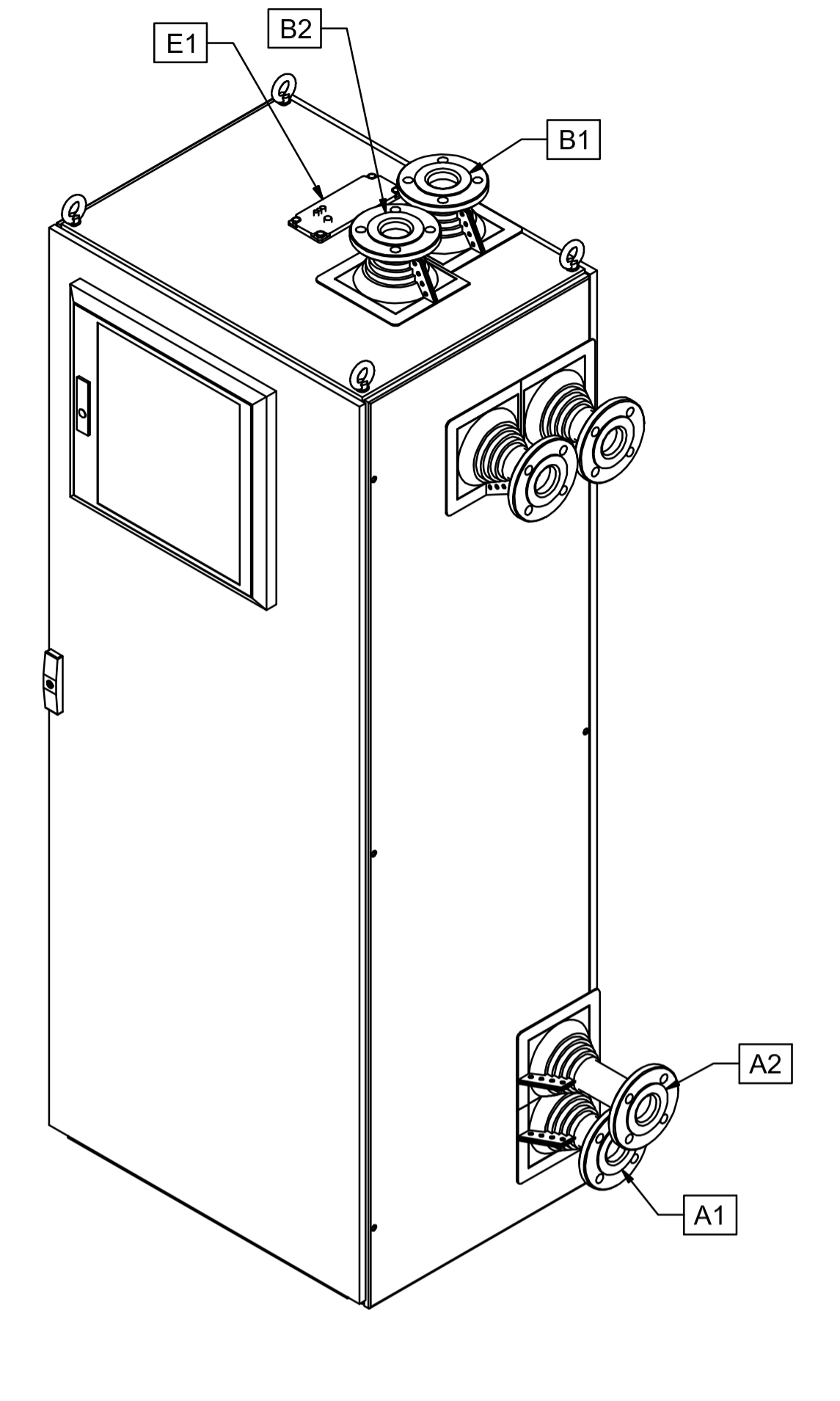
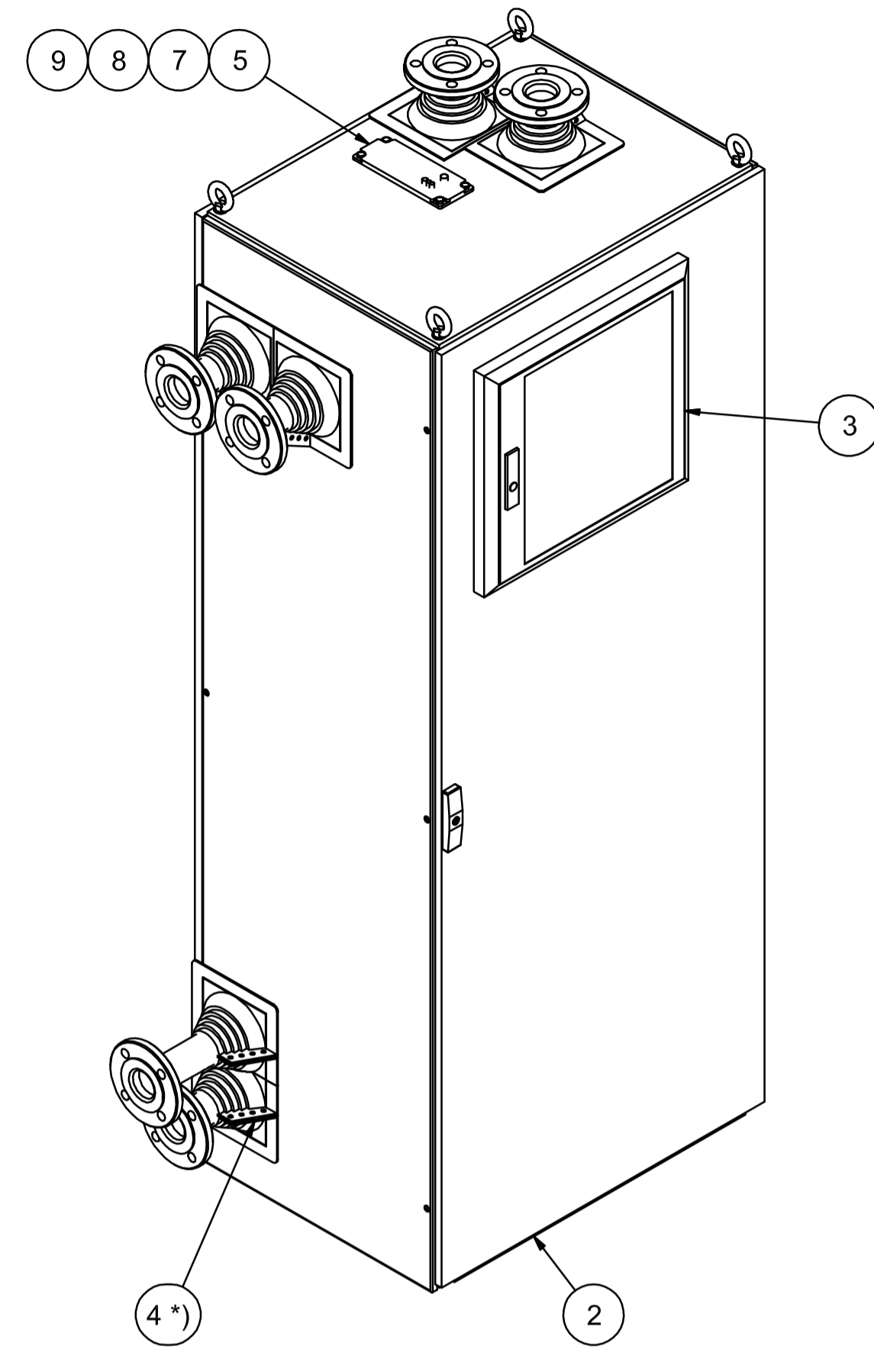
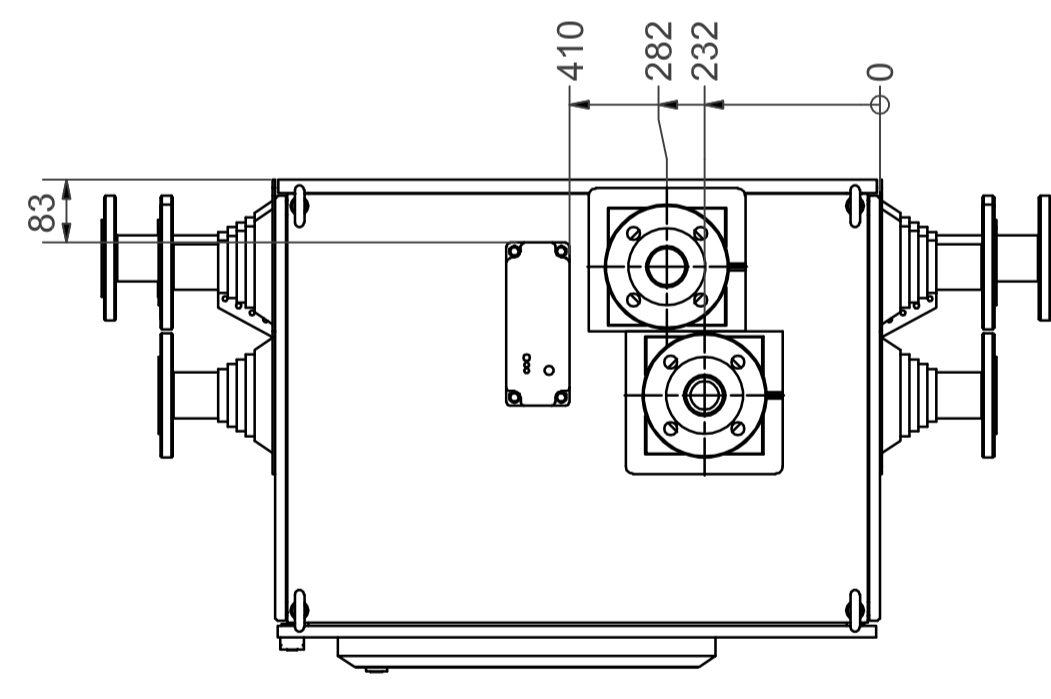
FRONT VIEW



FRONT VIEW OPEN DOOR



BACK VIEW OPEN WALL



NOZZLE DATA	SIZE
A1 FROM DRIVE	DN50
A2 TO DRIVE	DN50
B1 INLET CUSTOMER	DN50
B2 OUTLET CUSTOMER	DN50
E1 ELECTRICAL CONNECTION, Alternative 1	MC25
E2 ELECTRICAL CONNECTION, Alternative 2	MC25

Delivery includes flange connections to primary (2 pcs) and secondary (2 pcs) circuits. The directions of connections can be chosen according to the installation.

REVISION HISTORY				
REV	DESCRIPTION	DATE	BY	APPROVED
a	Misc.	31.08.2007	A-M. Haka	J-P. Sampola

*) NOTE:
See Retrofit assembly and dimensional drawing VL39-5003-07.
See Rittal openings drawing VL39-5003-06.

Part no.	Qty.	Part name, type and/or measures	Standard/Draw. no.	Material	Weight/pc
9	4	Washer A8,4	DIN 125	Zn	-
8	4	Hex nut M8	DIN 934	8 Zn	-
7	4	Hex-Head Bolt M8 x 18	DIN 933	8.8 Zn	-
6	8	Fastener	-	-	-
5	1	Multigate MC25	Mar-Con	-	-
4 *)	-	Retrofit Master Flash#1, 1/2"-4", Aztec Nordic	RF101B	Black EPDM	-
3	1	System window 500x470x33, Rittal	FT 2735.520	-	-
2	1	Cubicle TS8 800x2000x600	Rittal	-	-
1	1	HXL120	VL39-5023-05	-	-

GENERAL TOLERANCES ISO 2768-c		DRAWING NAME HXL120 RITTAL		CUSTOMER VACON OYJ	
DRAWING TYPE Assembly drawing		PROJECT NUMBER HXL-R-120-N-S		PROJECT NAME STD HX-unit	
DRAWN A-M. Haka		DATE 20.10.2006		SCALE 1:10	
CHECKED U. Kähtävä		DATE 20.10.2006		SIZE A1	
APPROVED J-P. Sampola		PROJECT NO. VL39-5023-10-000		CUSTOMER PROJECT NUMBER VL39-5023-11	