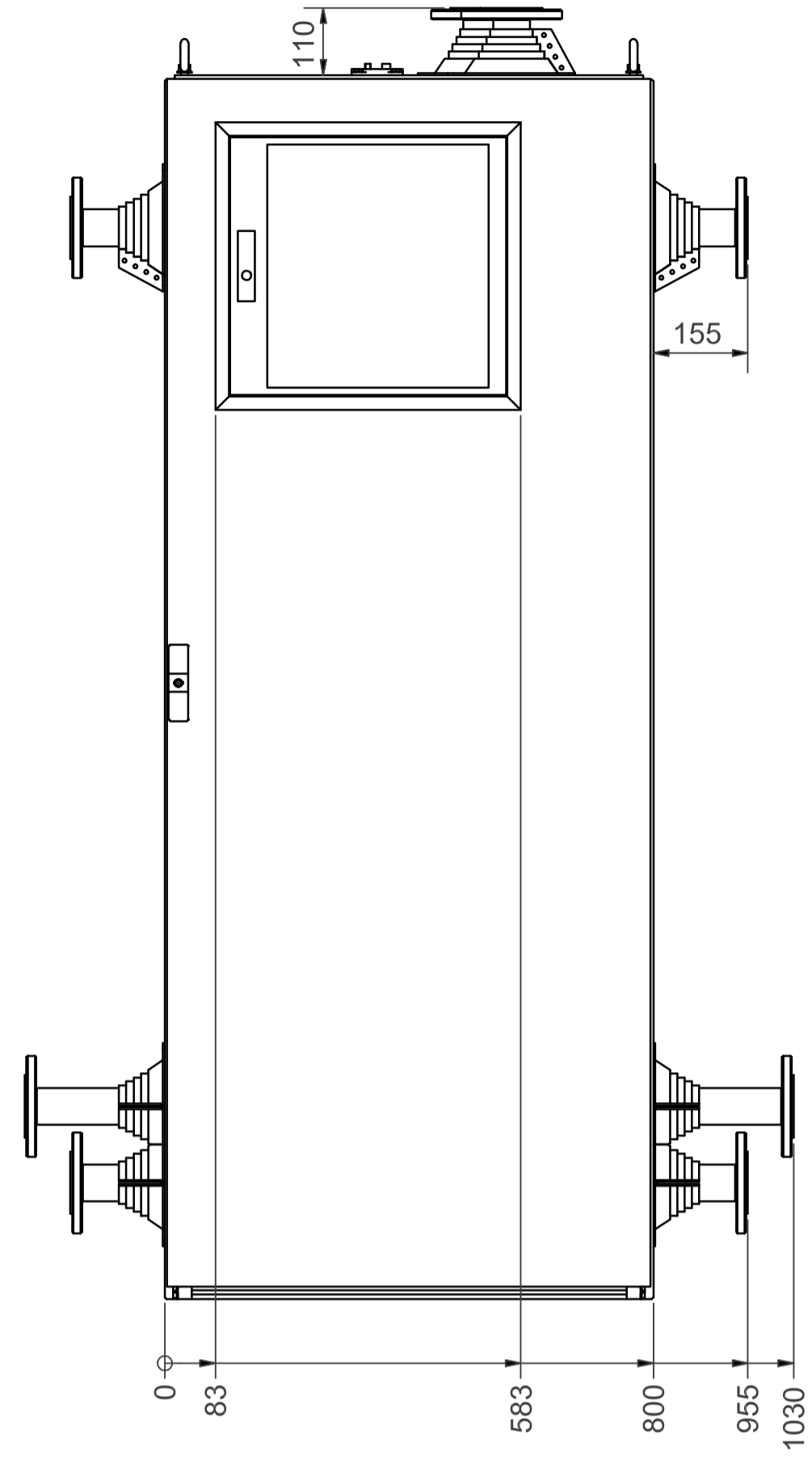
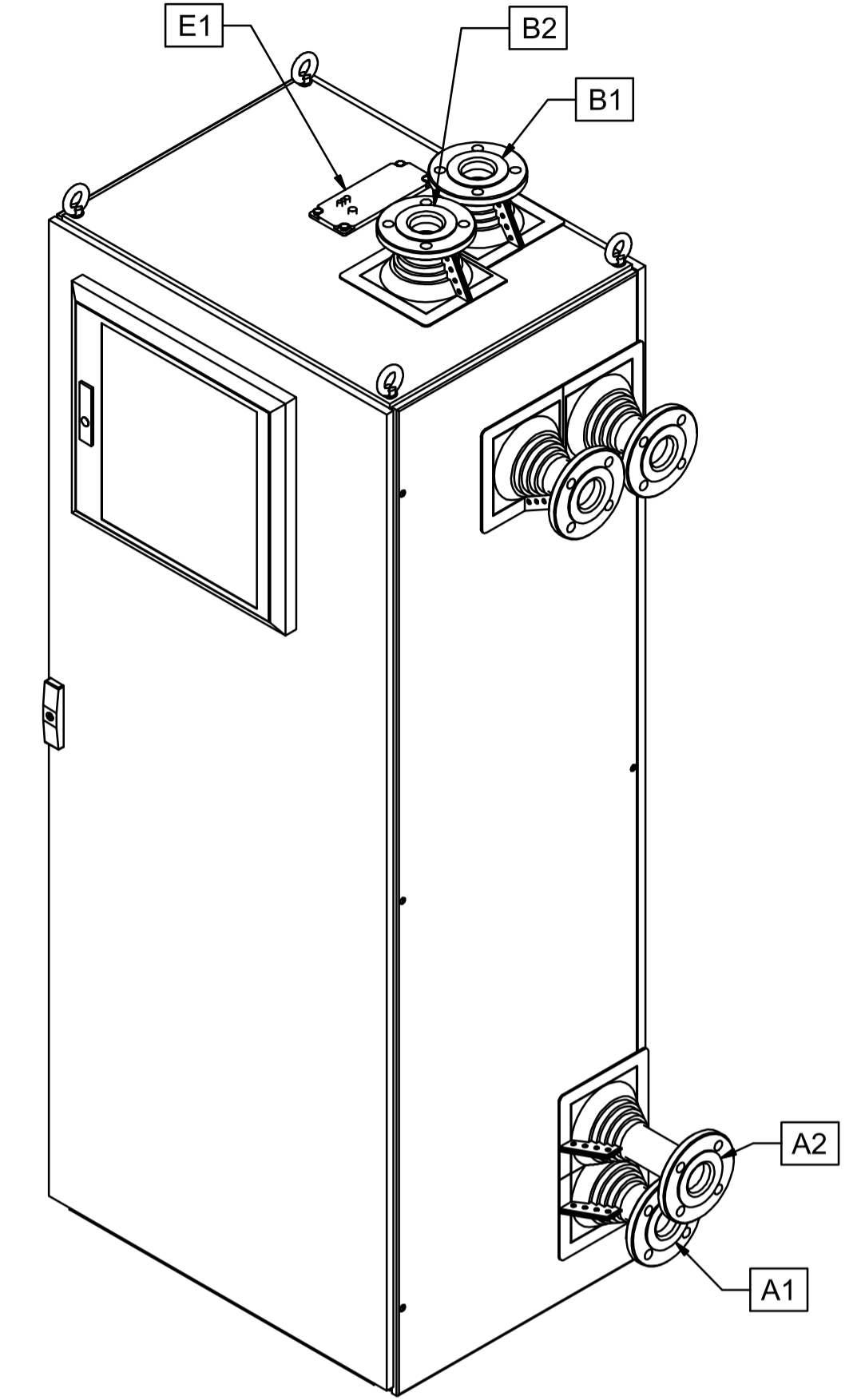
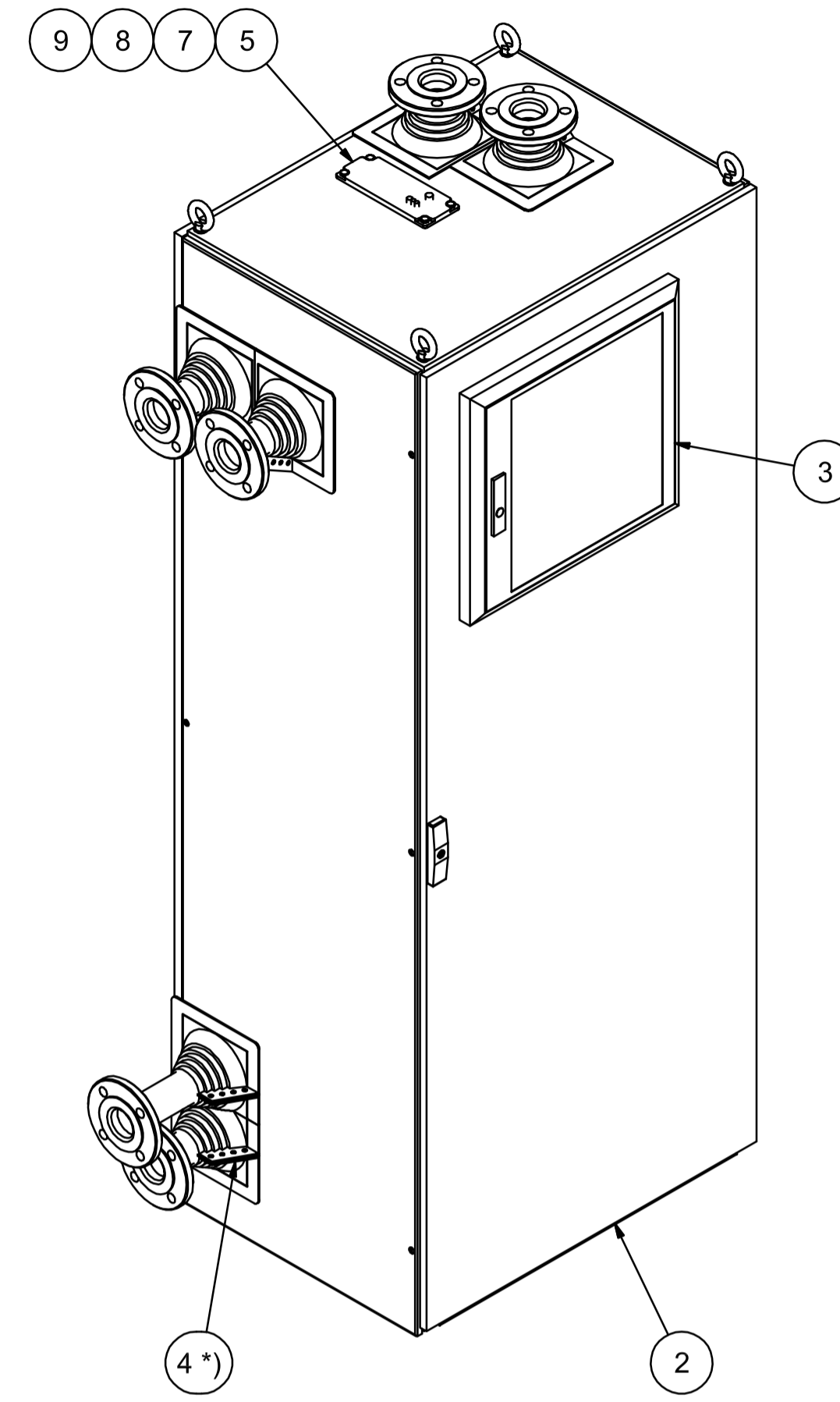
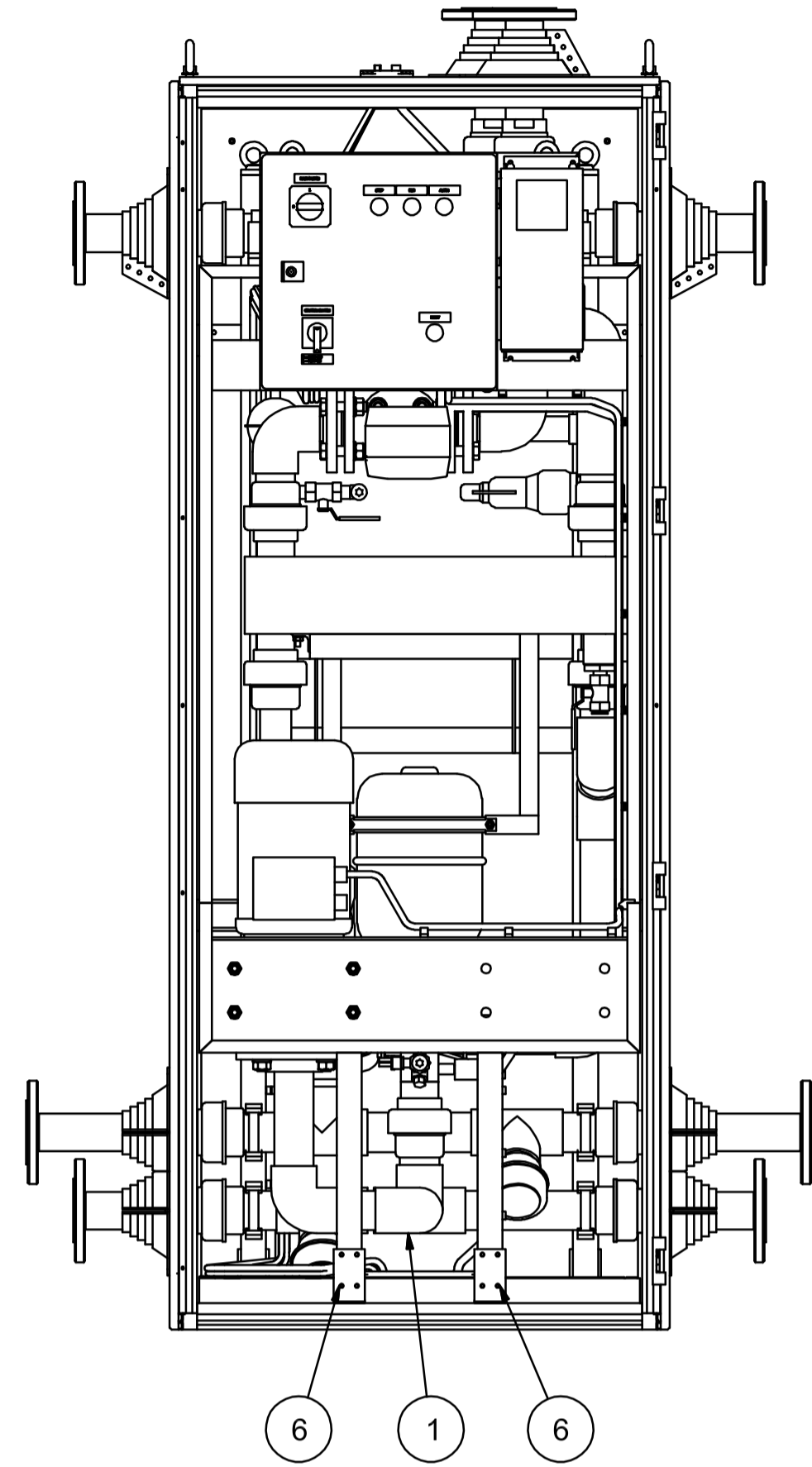


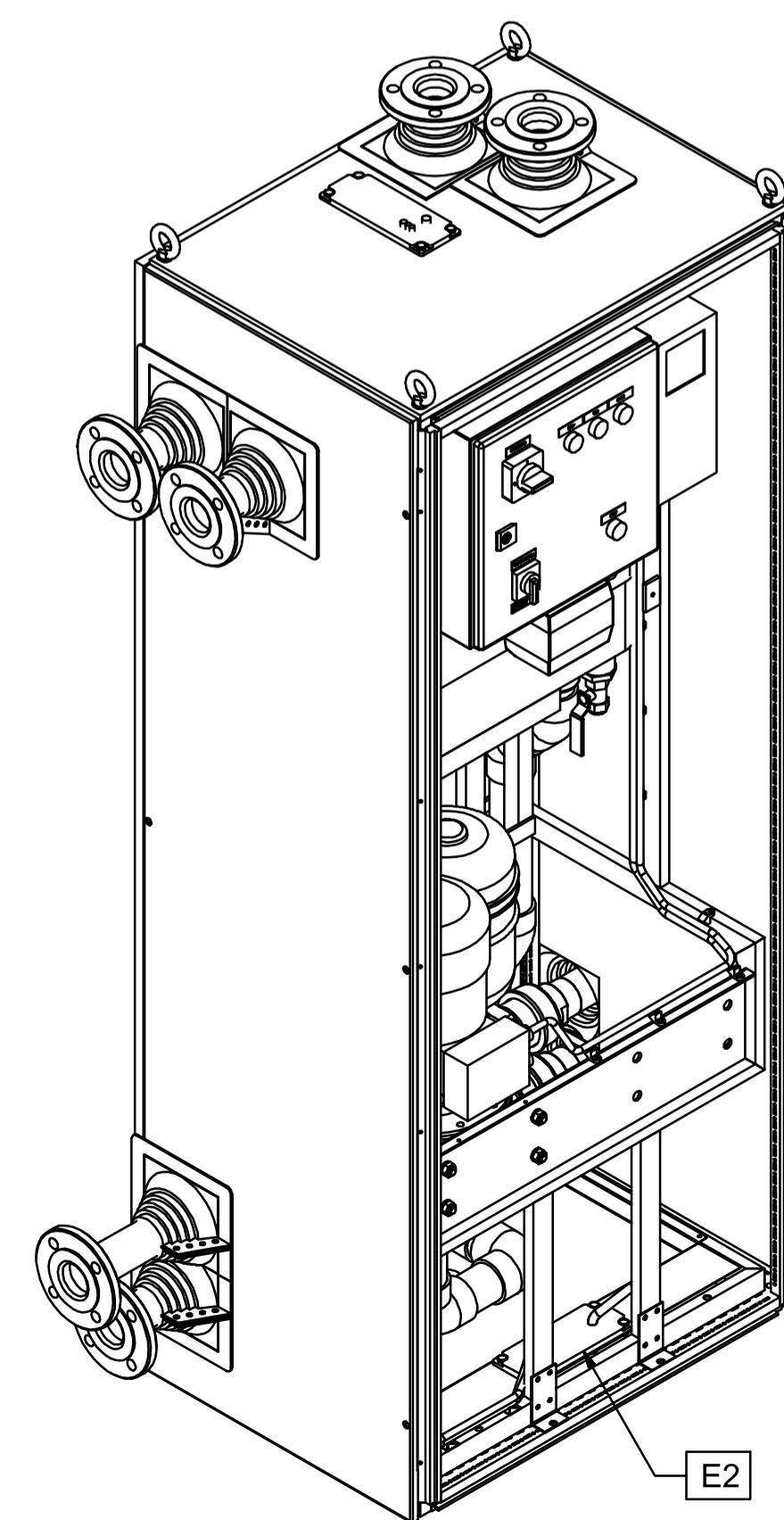
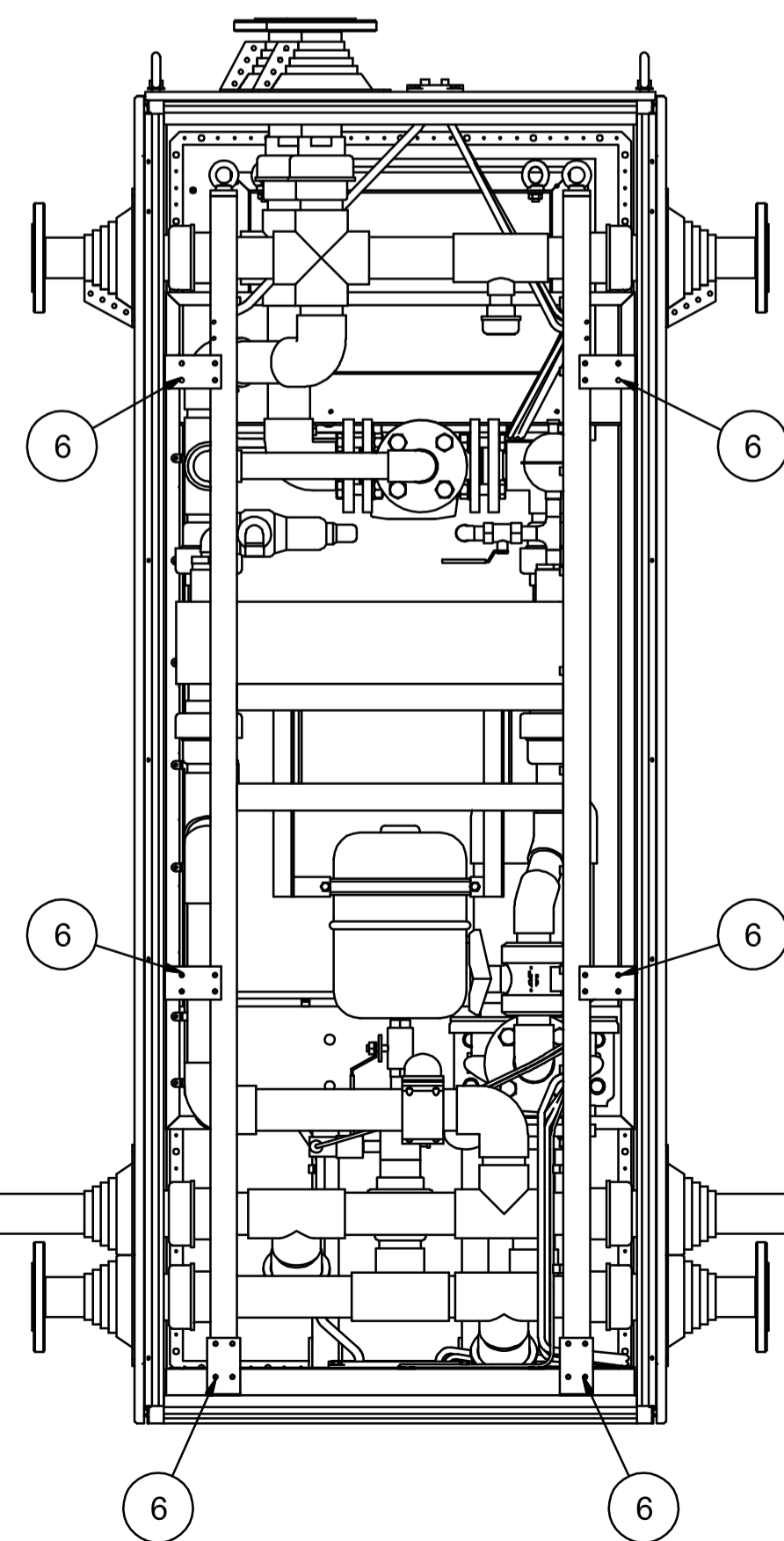
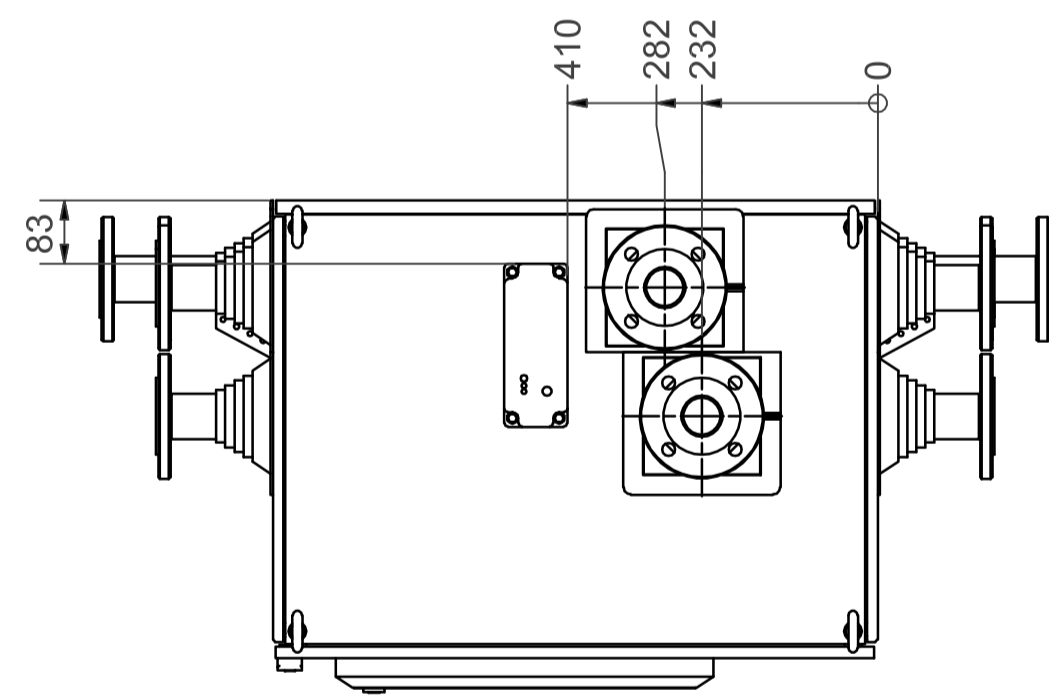
FRONT VIEW



FRONT VIEW
OPEN DOOR



BACK VIEW
OPEN WALL



NOZZLE DATA	SIZE
A1 FROM DRIVE	DN50
A2 TO DRIVE	DN50
B1 INLET CUSTOMER	DN50
B2 OUTLET CUSTOMER	DN50
E1 ELECTRICAL CONNECTION, Alternative 1	MC25
E2 ELECTRICAL CONNECTION, Alternative 2	MC25

Delivery includes flange connections to primary (2 pcs) and secondary (2 pcs) circuits. The directions of connections can be chosen according to the installation.

REVISION HISTORY				
REV	DESCRIPTION	DATE	BY	APPROVED
a	Text added	24.05.2005	A.-M. Haka	J.-P. Sampola
b	Nozzle data added	30.08.2005	A.-M. Haka	J.-P. Sampola
c	Misc.	19.10.2006	A.-M. Haka	J.-P. Sampola
d	Misc.	30.08.2007	A.-M. Haka	J.-P. Sampola

*) NOTE:
See Retrofit assembly and dimensional drawing VL39-5003-07.

See Rittal openings drawing VL39-5003-06.

Part no.	Qty.	Part name, type and/or measures	Standard/Draw. no.	Material	Weight/pc
9	4	Washer A6,4	DIN 125	Zn	-
8	4	Hex nut M8	DIN 934	8 Zn	-
7	4	Hex-Head Bolt M8 x 18	DIN 933	8.8 Zn	-
6	8	Fastener	-	-	-
5	1	Multigate MC25	Mar-Con	-	-
4 *)	-	Retrofit Master Flash#1, 1/2"-4", Aztec Nordic	RF101B	Black EPDM	-
3	1	System window 500x470x33, Rittal	FT 2735.520	-	-
2	1	Cubicle TS8 800x2000x600	Rittal	-	-
1	1	HXL120	VL39-5023-01	-	-

GENERAL TOLERANCES		DRAWING NAME		CUSTOMER	
ISO 2768-c		HXL120 RITTAL		VACON OYJ	
		Assembley drawing		PROJECT NAME	
		PROJECT NUMBER		STD HX-unit	
		HXL-R-120-N-P		CUSTOMER PROJECT NUMBER	
		DATE		REV. NO.	
		01.10.2004		VL39-5023-046.000	
		SCALE		1:10	
		DATE		1:10	
		M. Myllymäki		A1	
		M. Forsén			
		J.-P. Sampola			

These documents must not be copied without our written permission. The information contained herein is confidential and intended for the use of the customer only. It is not to be distributed to other parties without our prior written consent.