



Installation Instructions

Graphical LCD Keypad Remote Mounting Kit AF-650 GP & AF-600 FP Drives

The remote mounting kit for graphical LCD keypad makes the keypad component compliant with Type 4X/IP66.

Items supplied

GE model #RMKYPDAC

- Sealing gasket
- Mounting bracket
- Mounting screws
- Cable (3 m)



Table 1.1 Approvals and Certifications

Mounting

1. Fit the sealing gasket on the keypad.

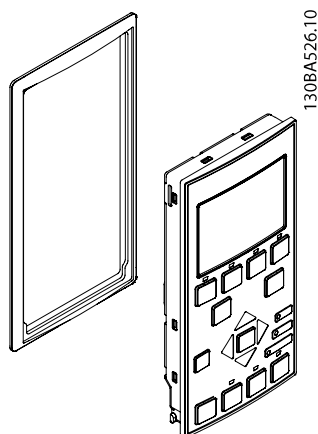


Illustration 1.1 Example: Gasket on Keypad

2. Cut out section of panel and locate the keypad in the cut-out.

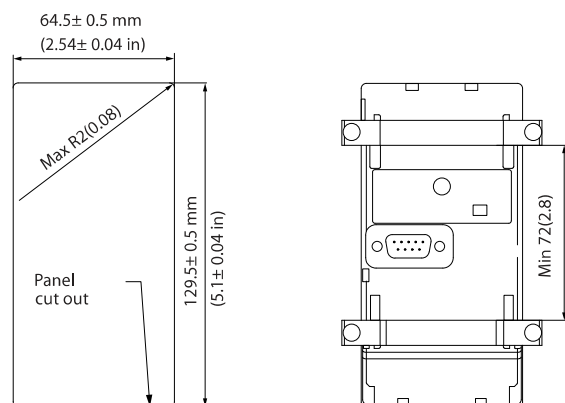


Illustration 1.2 Dimensions

3. Slide the mounting bracket into place on the backside of the keypad and fasten it with screws.

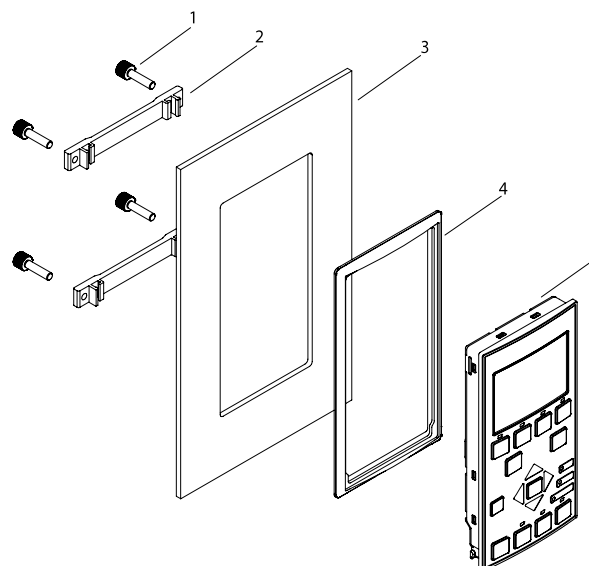


Illustration 1.3 Example: Keypad on Mounting Plate

1	Mounting screws
2	Mounting brackets
3	Mounting plate
4	Gasket
5	Keypad

Table 1.2 Legend to *Illustration 1.3*

4. Connect the cable to keypad and fasten it with the provided thread cutting screws.

The instructions do not purport to cover all details or variations in equipment nor to provide for every possible contingency to be met in connection with installation, operation or maintenance. Should further information be desired or should particular problems arise which are not covered sufficiently for the purchaser's purposes, the matter should be referred to the GE company.

AF-600 FP is a trademark of the General Electric Company.

GE
41 Woodford Avenue
Plainville, CT 06062

www.geelectrical.com/drives



imagination at work

