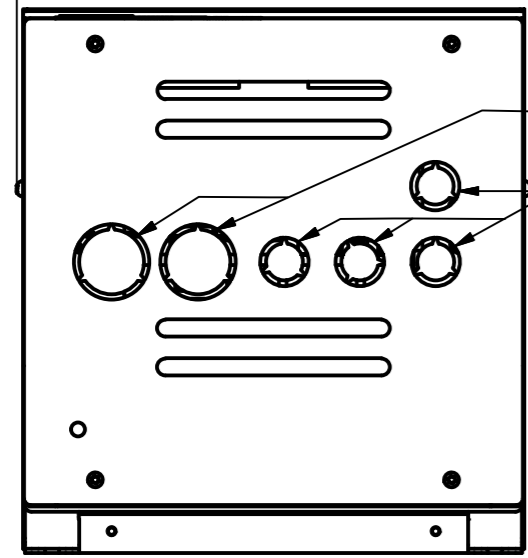
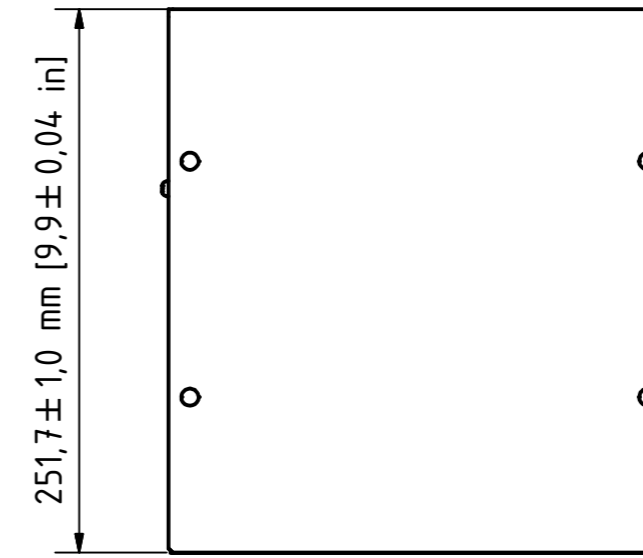
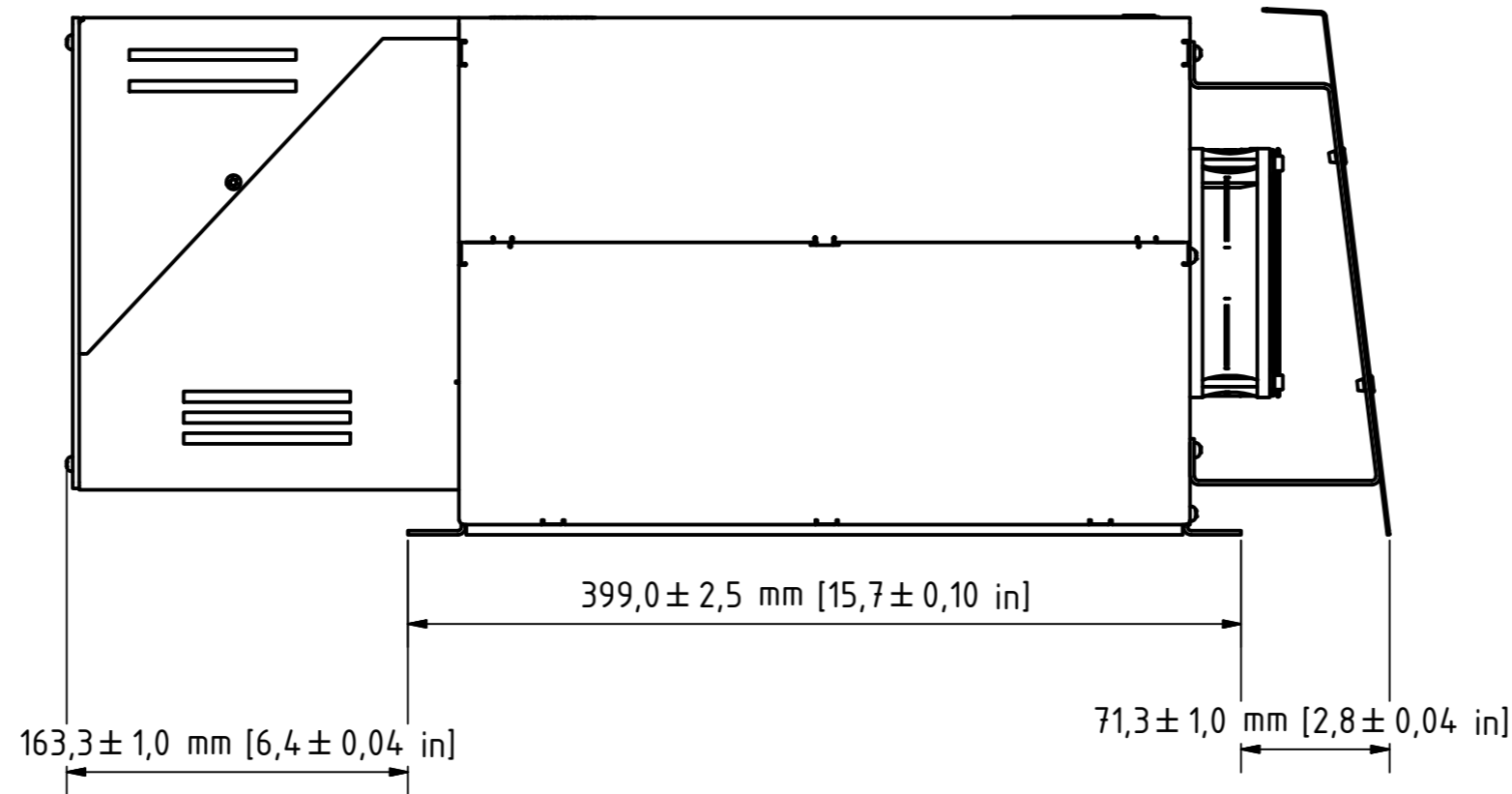


237,6 ± 1,0 mm [9,4 ± 0,04 in]

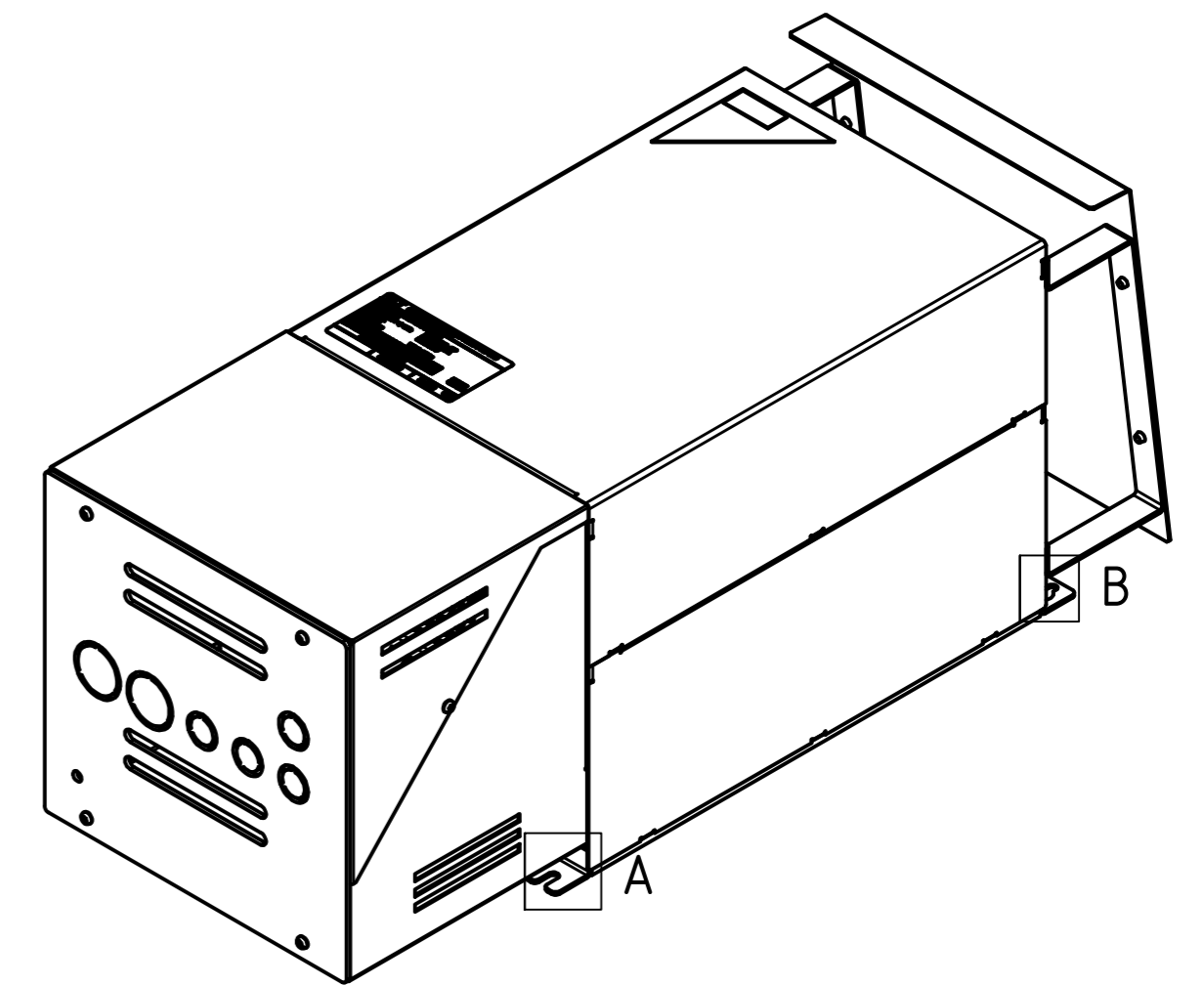
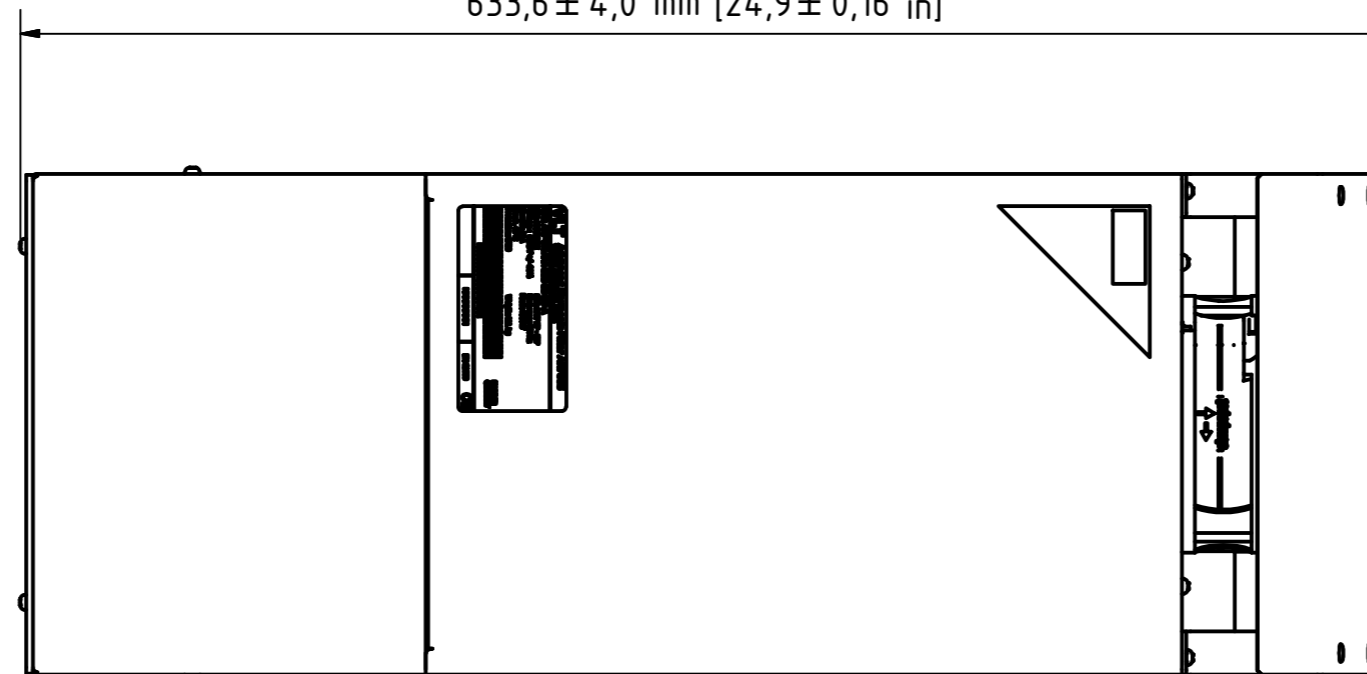


Ø34,7mm [1,4 in]

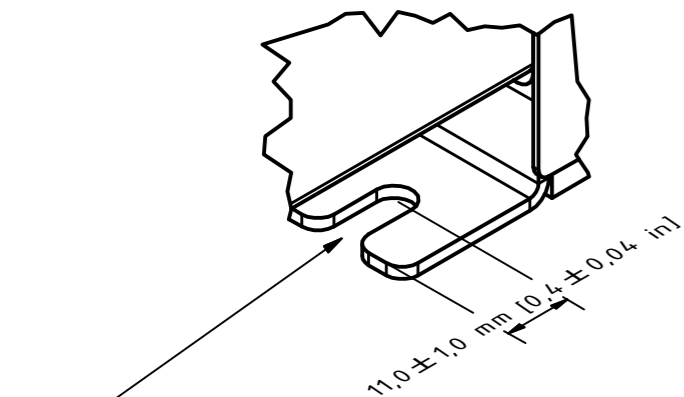
Ø22,5mm [0,9 in]



633,6 ± 4,0 mm [24,9 ± 0,16 in]



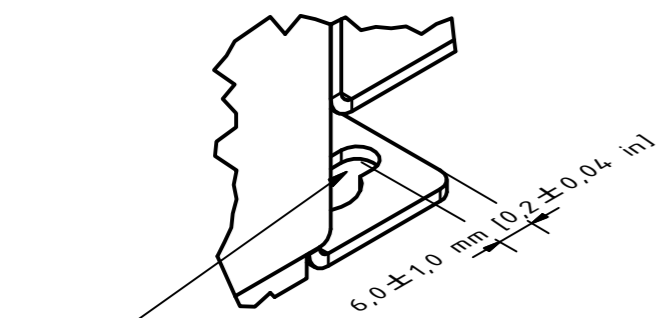
A



use M6 screws

4 holes must be used to fix the AHF with M6 screws.

B



use M6 screws

		175C1099		VLТ Advanced Harmonic Filter AHF	
		DATE		Name	
Drawn	2018-10-29	MK	X2 IP 21 with external fan		
Reviewed	2018-11-06	FR			
Standard	DIN 2768-1 V				
Scale drawing	1:1				
Print scale	Approx. 1:5		Drawing Number		1 A2
X2-V3 IP21 ef					
Status	Modifications	DATE	Name		