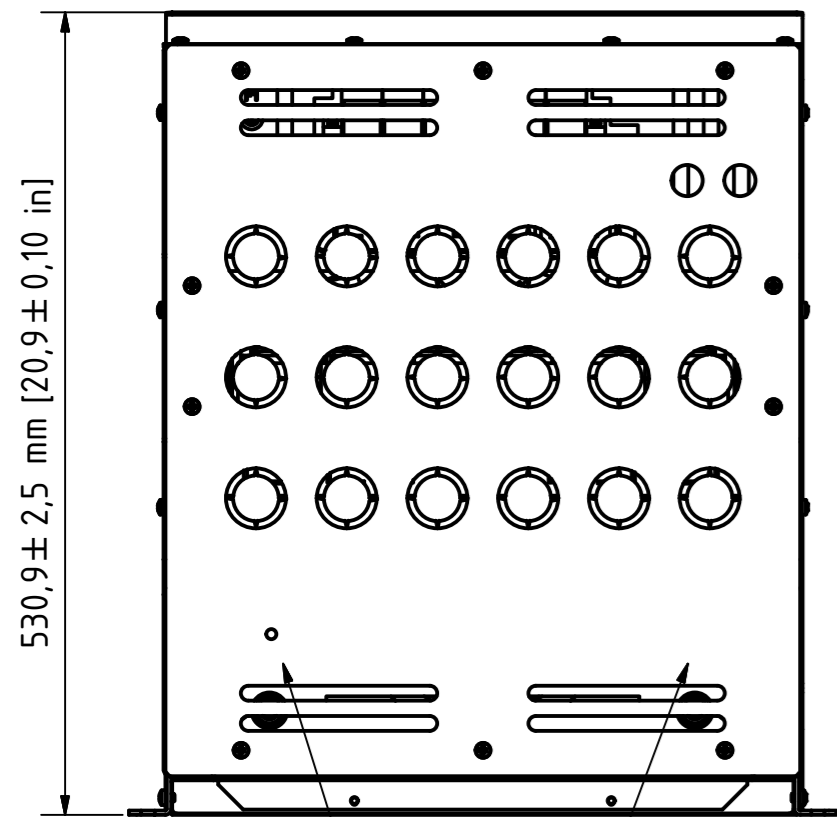
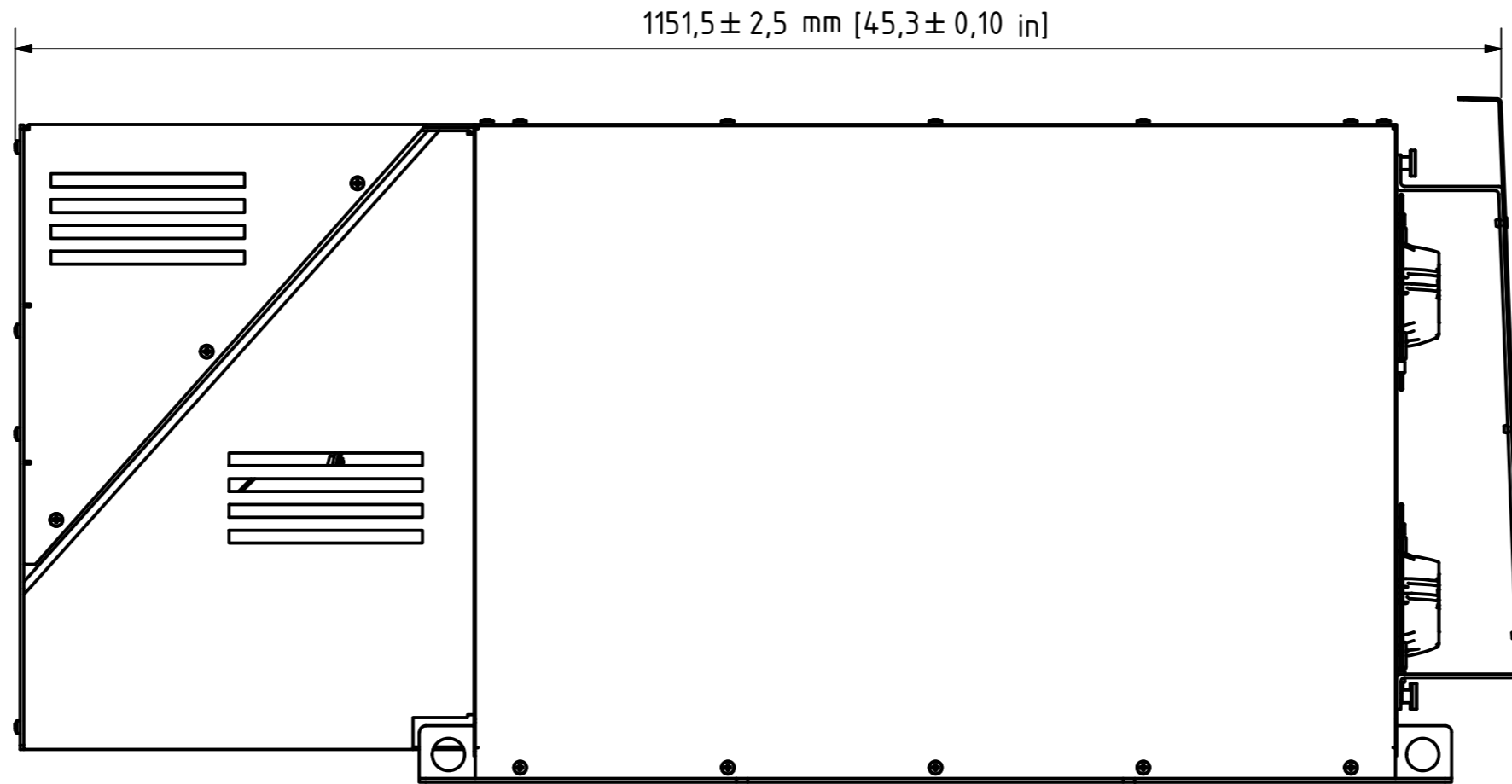


X8

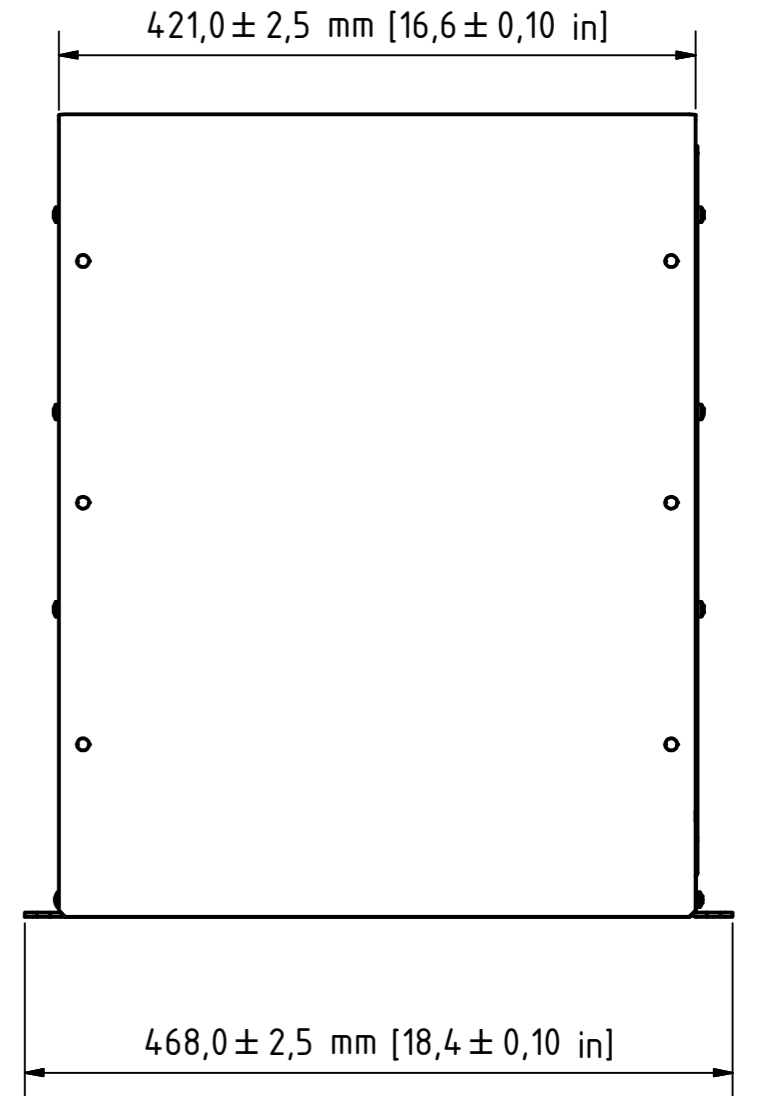


530,9 ± 2,5 mm [20,9 ± 0,10 in]

PE M12

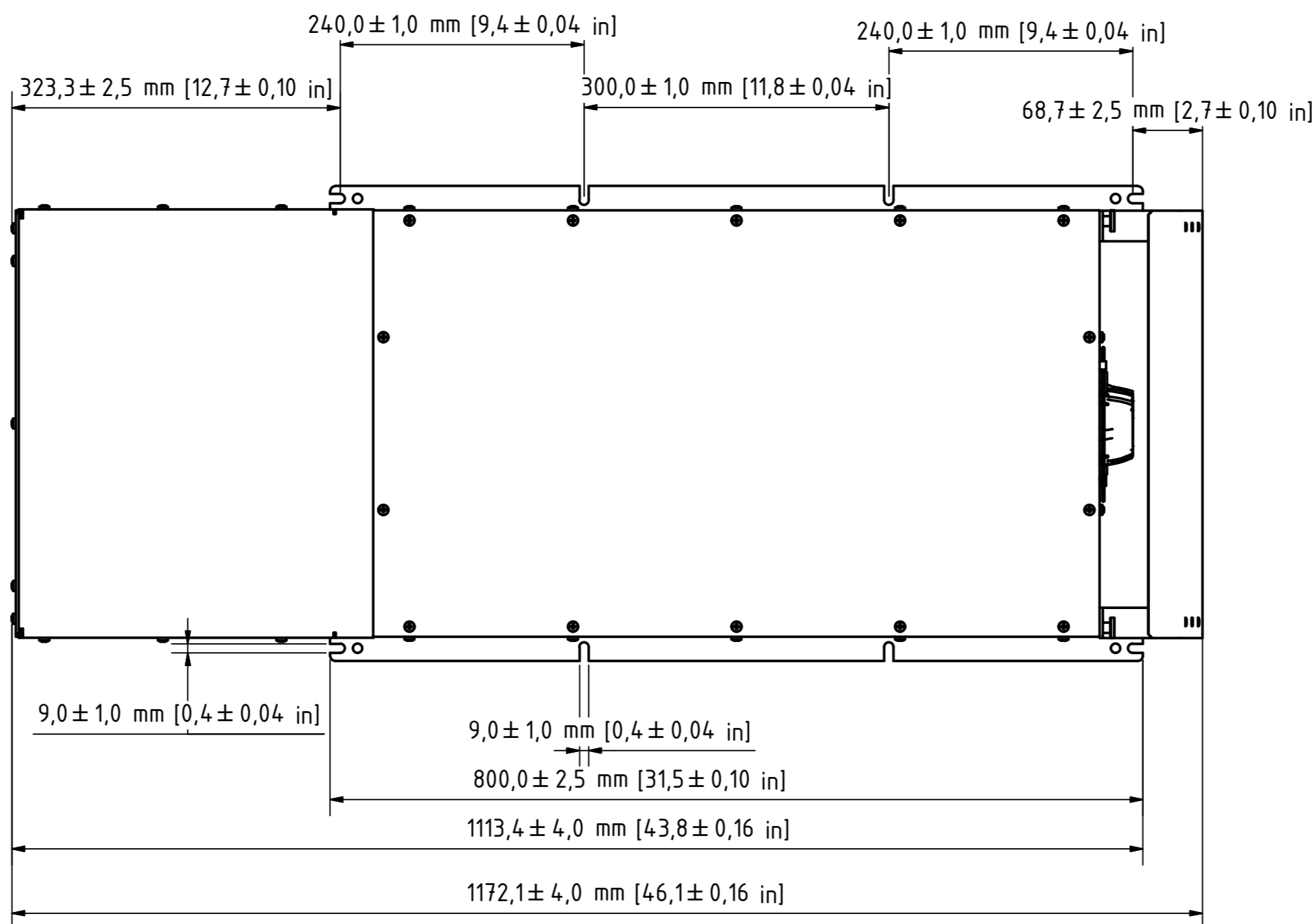


1151,5 ± 2,5 mm [45,3 ± 0,10 in]



421,0 ± 2,5 mm [16,6 ± 0,10 in]

468,0 ± 2,5 mm [18,4 ± 0,10 in]



240,0 ± 1,0 mm [9,4 ± 0,04 in]

240,0 ± 1,0 mm [9,4 ± 0,04 in]

323,3 ± 2,5 mm [12,7 ± 0,10 in]

300,0 ± 1,0 mm [11,8 ± 0,04 in]

68,7 ± 2,5 mm [2,7 ± 0,10 in]

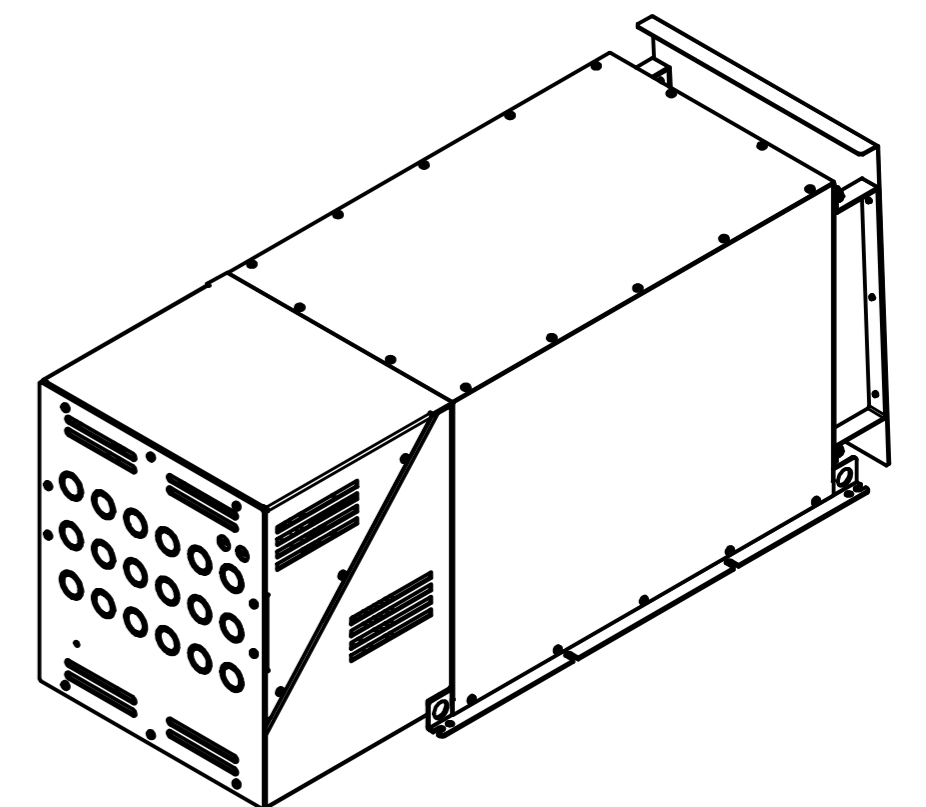
9,0 ± 1,0 mm [0,4 ± 0,04 in]

9,0 ± 1,0 mm [0,4 ± 0,04 in]

800,0 ± 2,5 mm [31,5 ± 0,10 in]

1113,4 ± 4,0 mm [43,8 ± 0,16 in]

1172,1 ± 4,0 mm [46,1 ± 0,16 in]



DATE		Name		Designation	
Drawn	28.01.2014	FR	AHF drawing X8 IP21 with internal fan 2		
Reviewed	01.09.2014	MK			
Standard	DIN 2768-1 V				
Scale drawing	1:1				
Print scale	Approx. 1:5				
Drawing Number			X8 C IP21 if2		1
Status			Modifications		A2
DATE	Name	P:\16_P&D\12_Entwicklung\12_3D CAD_Baufreizeichnungen\12_Bestteile\12_Überschwingungsfilter\Gehäuse\X8			